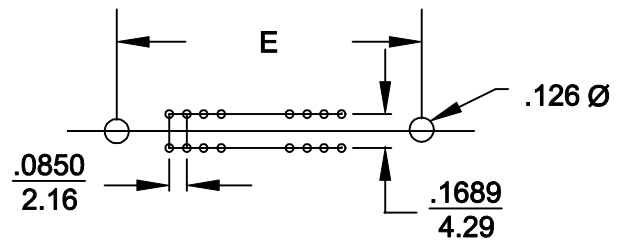
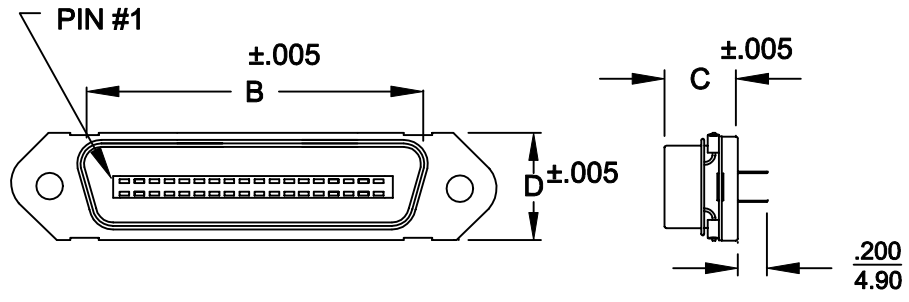
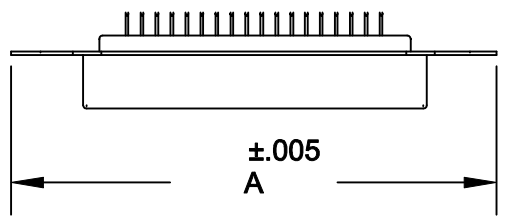


DESCRIPTION: .085" RIBBON SOLDER CUP

A B C D E

	1.729	.992	.502	.602	1.417
14	43.92	25.20	12.75	15.30	35.99
24	2.154	1.417	.502	.602	1.842
	54.71	36.00	12.75	15.30	46.79
36	2.665	1.925	.502	.602	2.352
	67.69	48.90	12.75	15.30	59.74
50	3.259	2.538	.502	.602	2.947
	82.78	64.47	12.75	15.30	74.85



111-XXX-103-001

SERIES _____

POSITIONS _____

014 _____

024 _____

036 _____

050 _____

GENDER _____

1 = MALE _____

TERMINATION _____

3 = SOLDER CUP _____

SHELL PLATING _____

3 = NICKEL _____

HARDWARE OPTIONS _____


00 = NO HARDWARE _____

PLATING OPTIONS _____

01 = GOLD FLASH _____

MATERIALS:

INSULATOR: GLASS-FILLED THERMOPLASTIC
 UL RATED 94V-0
 CONTACTS: COPPER ALLOY
 ELECTRICALS:
 CONTACT CURRENT RATING: 5 AMPS
 DIELECTRIC WITHSTANDING VOLTAGE: AC 1200 R.M.S.
 INSULATION RESISTANCE: 1000 mohms MINIMUM AT 500V DC
 CONTACT RESISTANCE: 30 mOHMS MAXIMUM
 OPERATING TEMPERATURE: -55°C TO +125°C

	THESE DRAWINGS AND SPECIFICATIONS ARE THE PROPERTY OF NorComp AND SHALL NOT BE REPRODUCED, COPIED OR USED AS THE BASIS FOR THE MANUFACTURE OF SALE OF APPARATUS WITHOUT WRITTEN PERMISSION.		DRAWN: WAYNE ROBBINS	DATE: 8-23-98
			CHECKED: PAM JENKINS	DATE: 8-24-98
<h1>NorComp</h1>		SCALE:	SHEET 1 OF 1	REV 5
		DWG NO. 111-XXX-103-001		